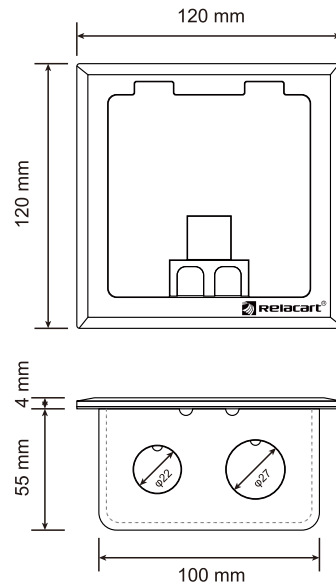
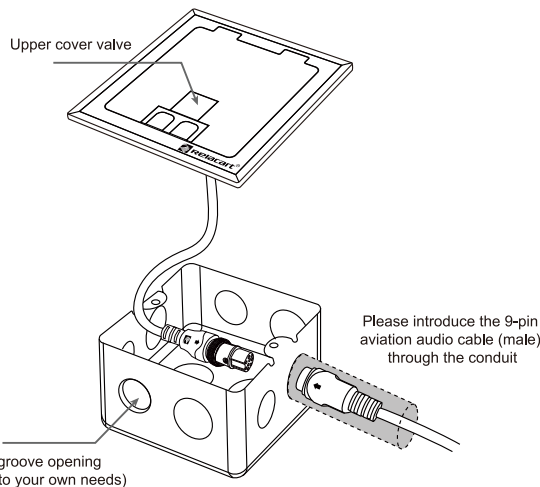
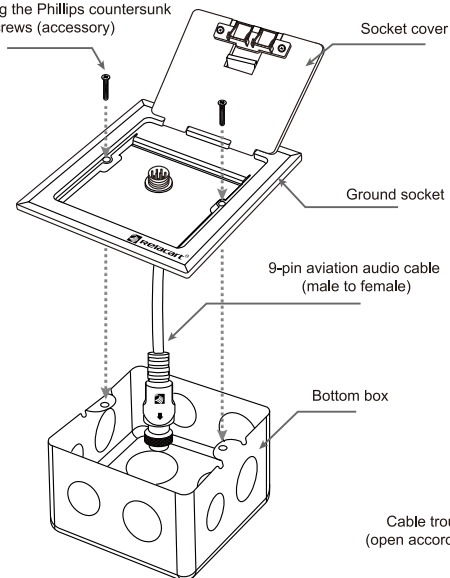


Installing the Phillips countersunk head screws (accessory)



Installation wiring method

1. When pouring cement, first place the bottom box in the predetermined position, and introduce the 9-pin aviation audio cable (male) to be installed into the bottom box.
Note: Pry open the cable trough opening according to your own needs (φ22mm, φ27mm optional).
2. Insert the 9-pin aviation audio cable (male) introduced into the conduit and the 9-pin aviation audio cable (female) from the socket into the corresponding holes, and tighten the screw lock to prevent them from falling off.
3. Open the upper cover of the hidden ground socket to expose the mounting screw holes; fix it to the bottom box with two cross-countersunk head screws, and it is ready for use.

Installation Precautions

1. The male and female 9-pin aviation audio cable must be inserted into the corresponding holes and the screw lock must be tightened.
2. Please do not overload it, otherwise it may cause fire or burn.
3. Please do not install it in a place that blocks traffic or in a humid place, otherwise it may cause damage injuries and accidents.
4. When installing or disassembling, the power supply of the equipment must be disconnected.