



WMS-1 is a wireless frequency management system, can be used in real-time scanning the interference-free frequency at site. Frequency scanning up to 960MHz, make the wireless space frequency visible. Connect the HR Series wireless receiver through the RS-485 communication protocol, the software can be used to monitor and control the wireless communication system in real time.

Product Specification

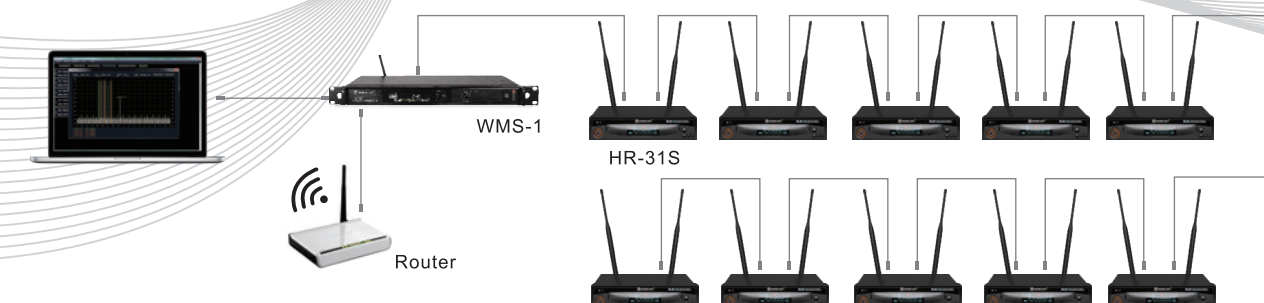


- NETWORK: Connect a router or computer to communicate with the control software
- RS-485: Connect to the wireless microphone and send information to the control software for real-time monitoring.
- ANTENNA: Receive signals from the live radio.
- Display: Display the AFS function to monitor the wireless frequency status in real time.

Main Frame Size:	EIA Standard Rack 1U
Frequency Range	240MHz-960MHz
Step Frequency	25KHz-5MHz
S/N:	-75dBm@0.5G
Interface:	RJ11, RJ45, BNC
Power Supply:	DC-12V /1000mA
Dimensions (mm):	410(W)×206(D)×43(H)
Weight :	About 2.2Kg

WMS-1
Wireless Management System

Key Features



WMS-1 WIRELESS MANAGEMENT SYSTEM

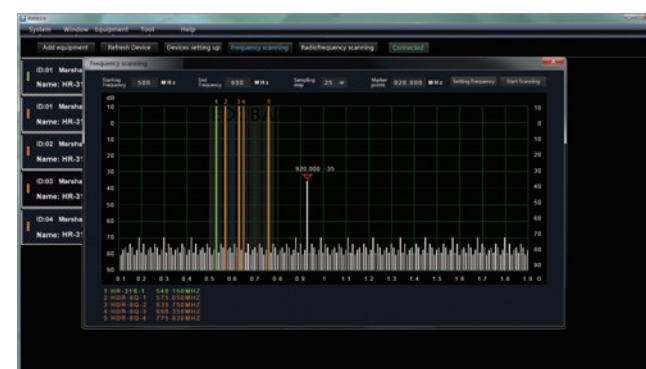
Software Interface



Software introduction

- Frequency scan: Scan the site for interference frequencies. Scanning range: 240MHz-960MHz
- the information states: Including the function information of the receiver and transmitter.
- Function control: Control the volume, frequency, SQ and other functions of the wireless receiver.
- RF scan: Scan the RF signal of the wireless receiver, automatically analyze and select the channel with strong signal.
- Channel frequency scan: Scan the receiver's frequency band independently to quickly select interference-free frequencies.
- Maximum connection of 32 wireless channels
- The software supports WINDOWS system, WIFI connection is available.

On-site Automatic Frequency Scanning



Scanning:

- Scanning: Obtain scan data through Relacart wireless receivers and compatible scanners, provide detailed graphic displays, and detect potential RF problems in time to avoid adverse effects on RF signals.

Frequency Setting for Equipment

