

The MAS-D microphone array system adopts a metal streamlined desktop design, built-in unique microphone array technology and integrated microphone module improve the pickup range and quality of the microphone array system. This ensures that the speaker can stand, sit, turn his head, and move back and forth within a specific range without affecting the sound effect. Elimination of gooseneck microphone and a larger pickup range allow speakers to have more room for use, and there is no sense of oppression that the gooseneck microphone is facing.

Product characteristics

The microphone array system provides a silent electronic switch, which can control the microphone's radio operation. At the same time, it provides a microphone working indicator. When the red light is on, the microphone is in the mute state, and when the green light is on, the microphone is in the radio state.

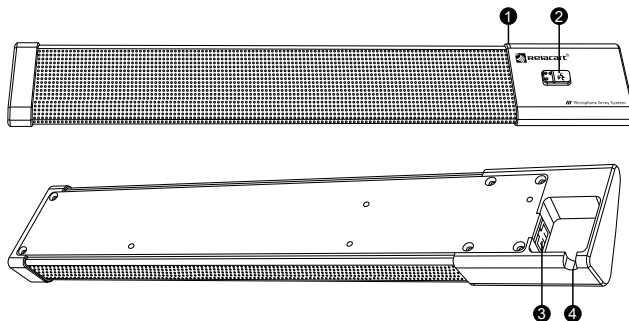
It can be used with the MAS-D host computer software. The host computer software can control the volume of the MAS-D microphone array system, turn on/off speech, pass-through/high-pass filter selection and other functions.

Using POE power supply and Dante protocol, professional RJ45 connection, only a network cable connected to the switch with POE power supply can be combined with other Dante devices to form a system output sound, simple and convenient installation, and ideal for various meetings, speeches, and recordings.

Thanks to the unique microphone module circuit design, the microphone array system has an ultra-long pickup distance of 80CM and a deeper pickup range, and its directional characteristics are significantly improved compared to ordinary cardioid microphones.

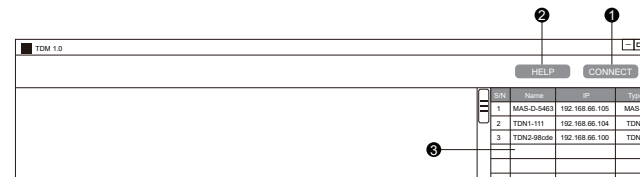
The MAS-D microphone array system has radio frequency interference (RF) shielding technology which provides an outstanding ability to prevent radio frequency interference and avoid interference from radio frequency such as mobile phones.

Product introduction

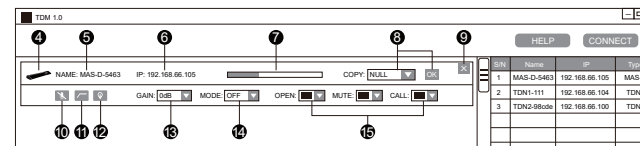


- 1 Working status indicator: Red light is on when mute, green light is on when speaking.
- 2 Switch: Short press to speak, then short press to mute.
- 3 Network port: Connect to a POE-powered switch with a network cable.
- 4 Cable trough: The network cable outlet on the back of the array microphone.

Computer software description

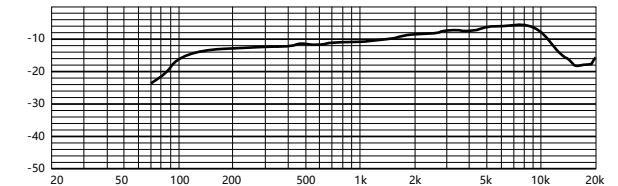


- 1 CONNECT: Click this button, it will be displayed as "CONNECTED", which means that the microphone in the LAN will be searched automatically and connected automatically.
- 2 HELP: Click to enter the software application guide.
- 3 Microphone list: Shows the number, name, model and IP address of microphones searched. Double-click the selected microphone to open the features page on the left.

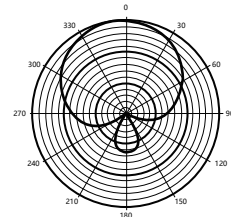


- 4 Microphone product profile: Shows the profile of the currently connected microphone.
- 5 NAME: Displays the name of the currently connected microphone.
- 6 IP: Displays the IP address of the current microphone.
- 7 Level signal display: Can visually display the size of the level signal.
- 8 COPY: Click the drop-down menu to select the microphone with set parameters, and then click "OK" to copy the set parameters to the current microphone. (Note: Only the same model of microphone can be copied)
- 9 Close the microphone function window button.
- 10 Mute switch: One button on/off mute.
- 11 Low cut switch: After pressing this switch, the software can intelligently filter the low frequency noise in the environment picked up by the microphone.
- 12 Positioning switch: After pressing this switch, the corresponding microphone LED will flash. You can quickly find the position of the microphone according to the flashing LED light.
- 13 GAIN: Gain adjustment button, there are 6 levels of gain adjustable (+15dB/+12dB/+9dB/+6dB/+3dB/0dB). "0" is the default gear, at this time the gain is off, when the switch is set to "+15dB/+12dB/+9dB/+6dB/+3dB" any gear, to increase the pickup sensitivity.
- 14 MODE: Microphone mode, a total of 4 modes (ON/OFF/PTT/PTM).
ON: At the beginning of power on, the LED light is green, and the light touch switch is mute, and the LED light is red;
OFF: When powered on, the initial mute, LED red, touch the switch to speak, LED light green;
PTT: At the beginning of power on, the LED light is mute, and the LED light is red. Long press the switch to speak, and the LED light is green;
PTM: Hen the power is on, the LED light is green. When the switch is long pressed, it will be mute and the LED light will be red.
Above is the light display in the default state.
- 15 LED color setting: You can customize the LED color of the microphone in various states.

Frequency response



Directional



Specification

Frequency response: 20-20000Hz
Input impedance: 2.2KΩ
Sensitivity: -11dB at 1KHz @ 1Pa
Signal to noise ratio: 65dB at 1KHz
Maximum input level: -14dBA at 1KHz @ 1Pa
Pickup distance: 80CM
Port: RJ45
Power supply mode: POE IEEE802.3
Power consumption: 2.3W
Dimensions(mm): 348(L) x 60(W) x 31(H)
Weight: about 400g
DANTE network: RJ45 connector, CAT5 or CAT6 network above 100Mbps

Connection diagram

